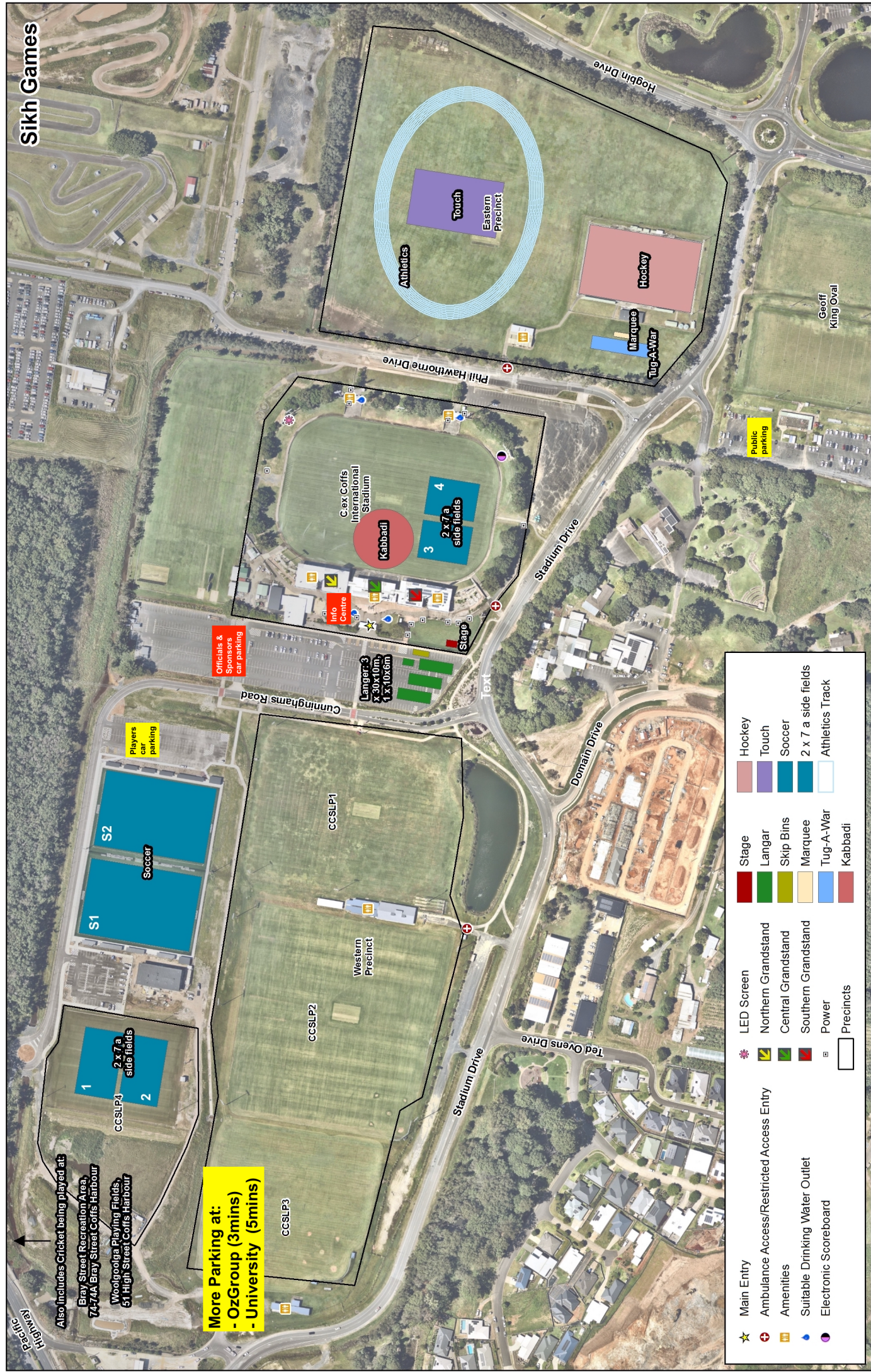


Sikh Games



Also Includes Cricket being played at:
 Bray Street Recreation Area,
 74-74A Bray Street, Coffs Harbour
 Woolgoolga Playing Fields,
 51 High Street, Coffs Harbour

More Parking at:
 - OzGroup (3mins)
 - University (5mins)

★ Main Entry	✳ LED Screen	🟠 Hockey
⊕ Ambulance Access/Restricted Access Entry	🟢 Northern Grandstand	🟡 Touch
🏠 Amenities	🟡 Central Grandstand	🟢 Soccer
💧 Suitable Drinking Water Outlet	🟠 Southern Grandstand	🟠 2 x 7 a side fields
📺 Electronic Scoreboard	⚡ Power	🟡 Athletics Track
	🏠 Precincts	🟡 Kabbadi



Cadastral, topographic, and aerial ACSM information supplied by the NSW Department of Finance and Services and maintained by Coffs Harbour City Council. (Copyright © 2021, NSW Department of Finance and Services). Other data displayed may have been supplied by various other agencies under licence.
 This map must not be reproduced in any form, whole or part, without written permission from Coffs Harbour City Council. This Council does not warrant the correctness of this map or information contained therein. This map Copyright © 2021, Coffs Harbour City Council.
 Council accepts no liability, or responsibility in respect to the map and any inaccuracies thereon. Any person relying on this plan shall do so at their own risk.

**Coffs Coast Sport & Leisure Park
 Incorporating C.ex Coffs International Stadium**
 This map produced by GIS Section
 Coffs Harbour City Council
 Date: 14/04/2022

SIKH GAMES

SCALE @ 1:3000
 0 12.5 25 50 75 100 125 150
 Metres
 Coordinate System: GDA 1984 MGA Zone 56
 Projection: Transverse Mercator
 Datum: GDA 1984



GRID NTH